

6P50

MOVEMENT SPECIFICATIONS  
CAL. 6P50 BY CITIZEN WATCH CO., LTD.  
10-1/2 LIGNE QUARTZ, 0 JEWEL

## 1. BASIC SPECIFICATIONS

## (1) Cal. No.

	6P50
Size	φ23.7 X 22.6 X 22.6
Total thickness (Max.)	3.5 mm
Hands	4 Date/Hour/Minute/Second
Moon phase	○
Battery life	Approx. 2 years

## (2) Time standard

Type of oscillation : Tuning fork type quartz crystal  
Oscillation : 32,768 Hz  
Accuracy : ±20 sec/month  
under normal circumstances

## (3) Battery

Type of Battery : Silver Oxide SR621SW or equivalent  
6.8φ X 2.1 Voltage : 1.55V

## (4) Others

Driving systems : Bipolar step motor  
Jewel : 0 Jewel

## (5) Balanceable weight of hands

Minute hand : Max. 30 mg - mm  
Second hand : Max. 7 mg - mm

6P50

## (6) Additional Mechanisms

- Calendar : Date (Center, clockwise)  
Month (3 o'clock position, clockwise)  
Day (9 o'clock position, clockwise)
- Date correction : Pull out the crown to the first click
- Day correction : Pull out the crown to the second click
- Month correction : Push button
- Picture dial : Moon phase (Age of the moon dial rotating one turn every 59 days  $\phi$  10.1 mm)
- Correction by pulling out the crown to the first click (clockwise)
- Power conservation switch : Pull out the crown to the second click
- Second hand stopping device : Pull out the crown to the second click

6P50

## 2. SHIPPING FORM

Separated parts : Setting stem X 1 : 065-379

Remark :

Setting stem (065-379)

Length of movement center to stem end : 20.03 mm  
Thread : 0.9 $\phi$  mm X 12.18 mm

## 3. OTHERS

\* Measurement of time rate

The unit time of measurement must be set at "10 sec." or an integer-fold value of 10 sec. owing to the DFC system. And the measurement must be carried out in a state of a complete watch.

\* Marking on movement

MIYOTA CO. UNADJUSTED  
NO JEWEL JAPAN 6P50

\* Typical clearance

Between case and movement  
-----Battery strap - Case back : Typical 150  $\mu$ Hand - Glass : 300 ~ 450  $\mu$   
Depend on Head length

## 4. NOTICE OF CASING

- (1) The month corrector button should be hidden for preventing the error of action.
- (2) The returning pressure of the month corrector button should be Min. 200 g
- (3) The interval between Dial and Glass end should be 150 $\mu$  to avoid breakage under drop.

This specification might be changed without the previous notice.

**Cal. 6P50**

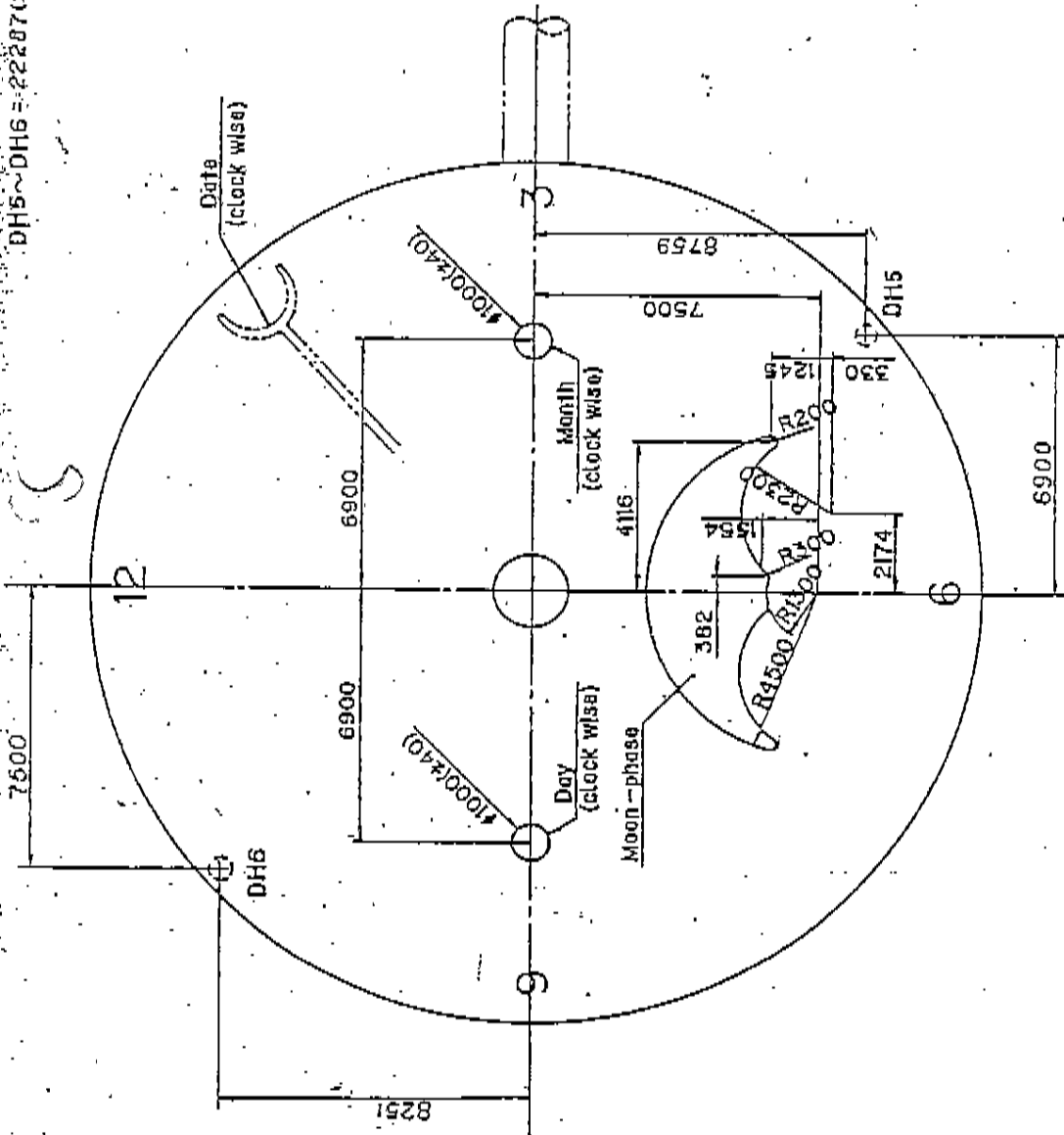
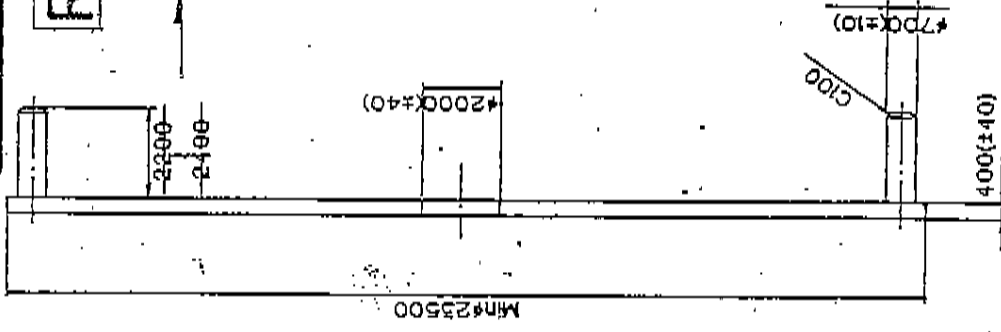
DH5 ~ DH6 = 22287 (±20)

**REVISED (修改)**

**1800 ~ 2000**

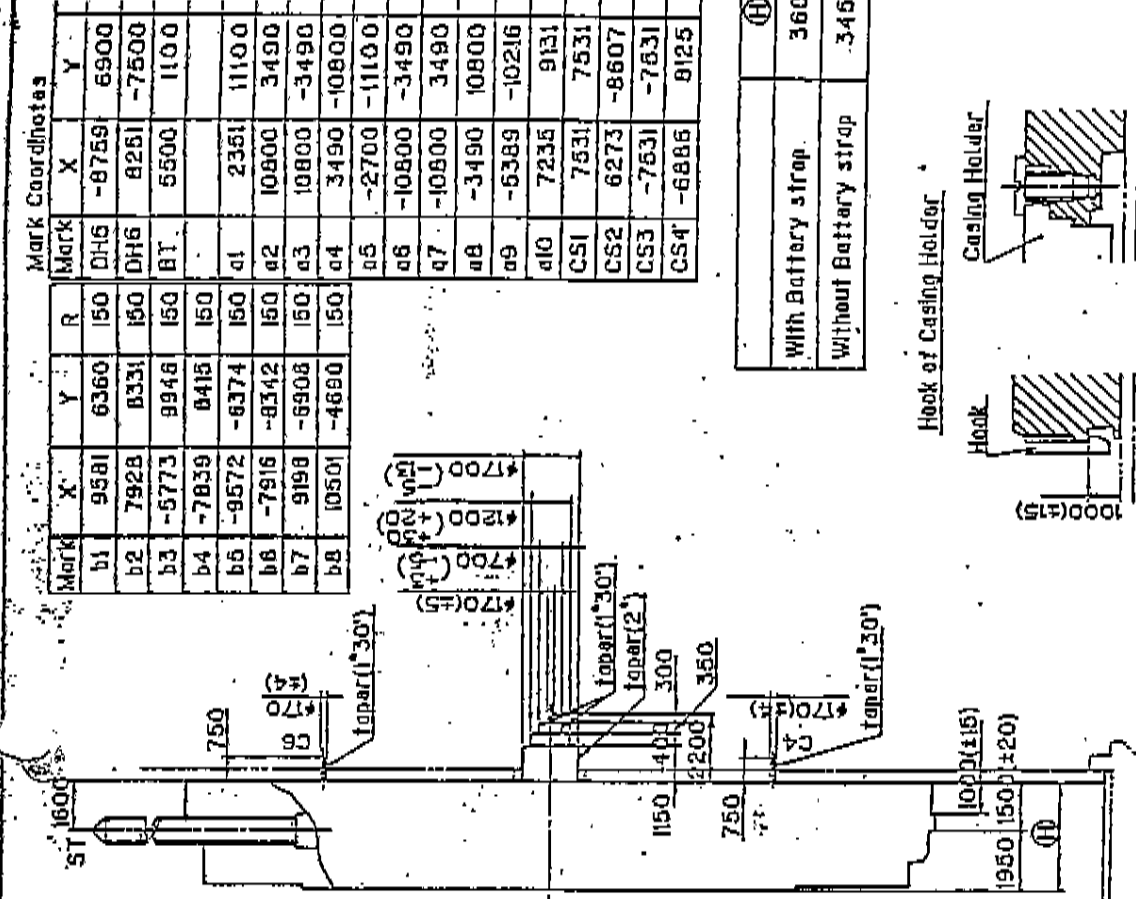
21 JUL 1993

**2/A**



Unit	1/1000mm	Name	DIAL
Scale		CAL. NO.	6P50
Quantity			
Material			
Heat			
Treatment			
Hardness			
Plating			
General tolerances			
Dimensions			
Angles			
Mark Date		Description	
Alterations		Appro	
Date		Name	
Drawn			
Checked			
Approved			

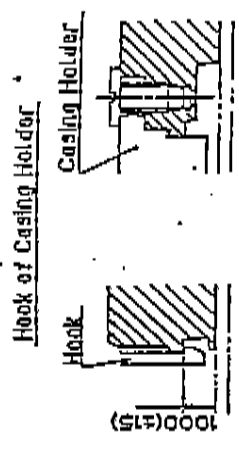
**CITIZEN WATCH CO., LTD.**



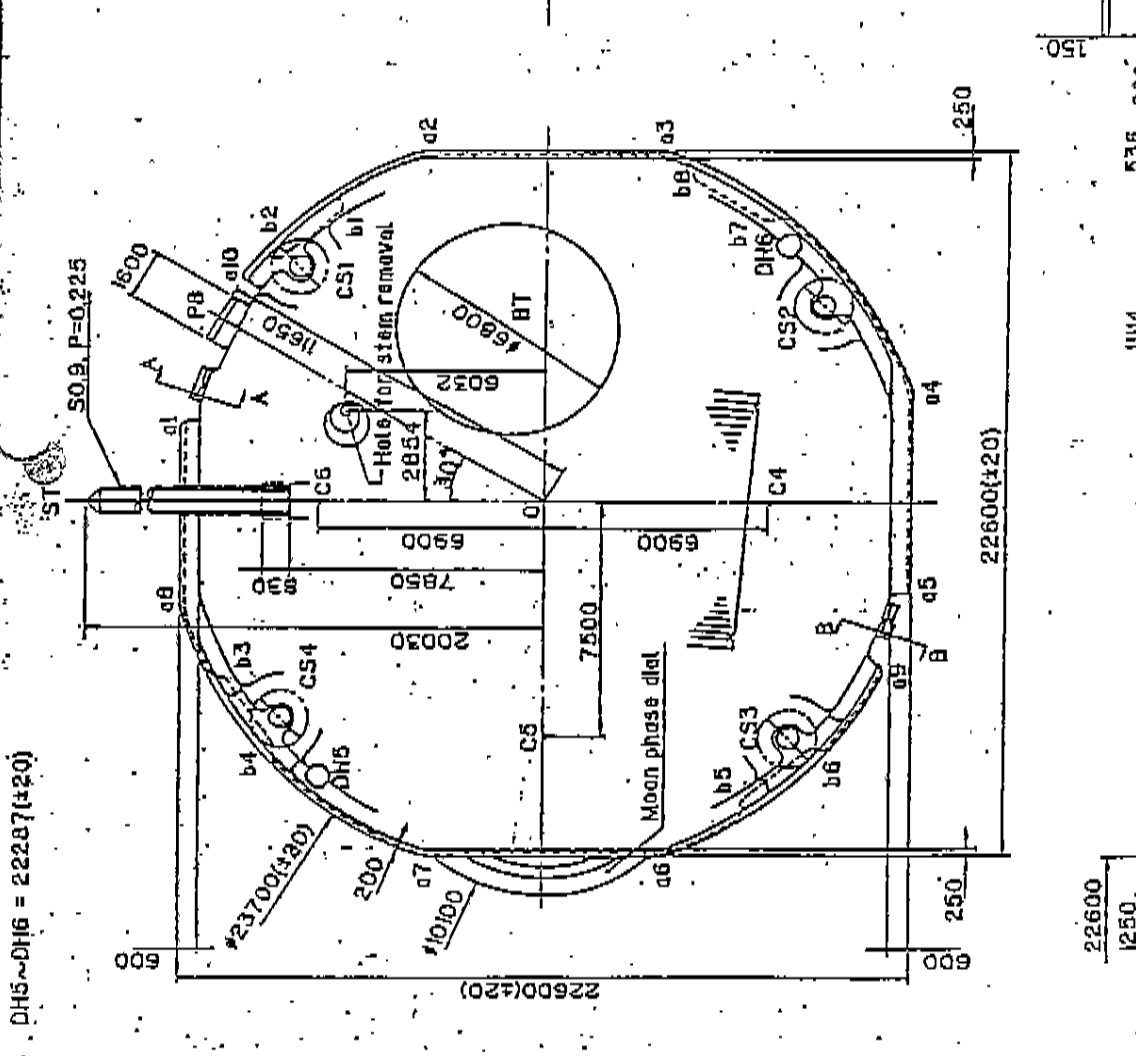
Mark Coordinates

Mark	X	Y	R	Mark	X	Y
b1	9581	6360	150	DH6	-8759	6900
b2	7928	8331	150	DH6	8251	-7500
b3	-5773	9948	150	BT	5500	1100
b4	-7839	8415	150			
b5	-9572	-6374	150	a1	2351	11100
b6	-7916	-8342	150	a2	10800	3490
b7	9198	-6908	150	a3	10800	-3490
b8	10501	-4690	150	a4	3490	-10800
				a5	-2700	-11100
				a6	-10800	-3490
				a7	-10800	3490
				a8	-3490	10800
				a9	-6389	-10216
				a10	7235	9131
				C51	7531	7531
				C52	6273	-8607
				C53	-7631	-7631
				C54	-6886	9125

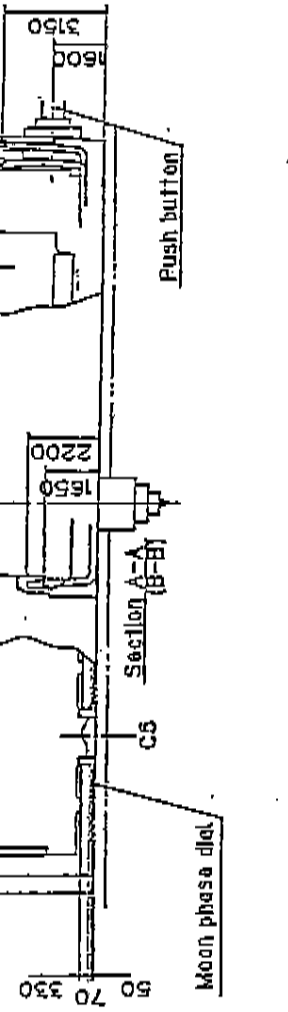
With Battery strap	3600
Without Battery strap	3450



Section b1~b4  
Section C51~4



DH5~DH6 = 22287(±20)



Unit	1/1000mm
Scale	
Quantity	
Material	
Heat	
Treatment	
Hardness	
Plating	
General tolerances	
Dimension	

Mark Date Description Appr. Treatment Alterations

Data	Name

Drawn Checked

Frame for Cc  
CAL. NO. 1

6P50 1/2